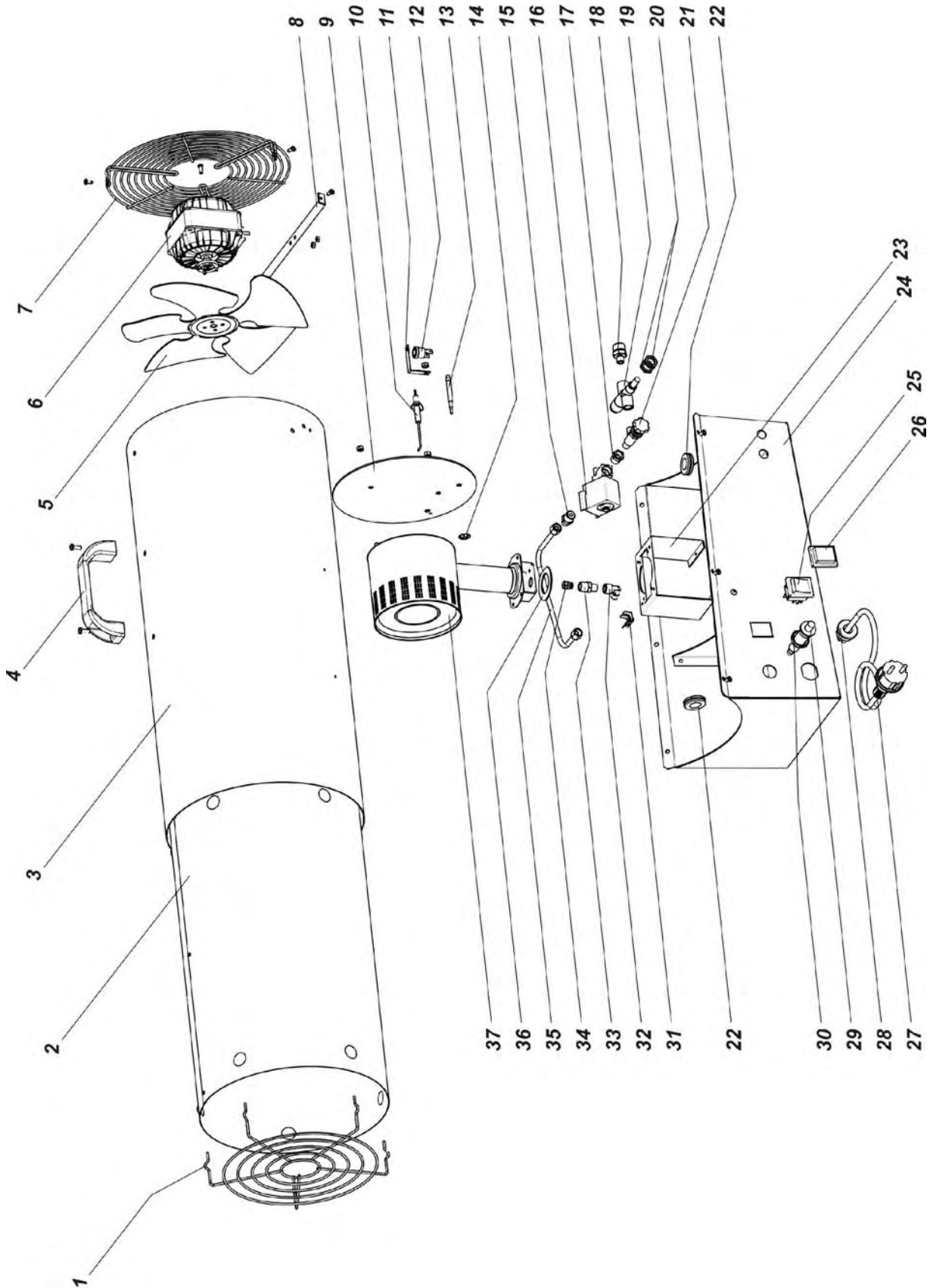


# MASTER GAS HEATERS

## MODEL 50 kW

## ILLUSTRATED PARTS BREAKDOWN



MASTER GAS HEATERS BLP 50M

Pos.	Code NR	Description
1	4160.740	OUTLET GRID
2	4161.083	COMBUSTION CHAMBER
3	S/R	COVER
4	4160.715	PLASTIC HANDLE
5	4160.691	FAN
6	4160.630	ELECTRIC MOTOR
7	4160.739	INLET GRID
8	4161.013	SUPPORT ELECTRIC MOTOR
9	4160.744	PLATE BURNER
10	4160.731	IGNITION ELETTRICAL FOLDER
11	4160.708	SUPPORT FOR THERMOSTAT
12	4160.636	SAFETY THERMOSTAT 90°
13	4160.953	INTERRUPTED THERMOCOUPLE
14	4160.627	ELASTIC WASHER
15	4160.962	NOZZLE 1/4" - 1/8"
16	4160.963	ELECTROVALVE
17	4160.964	NIPPLES REDUCER
18	4160.700	GAS INLET NOZZLE 3/8 M - 1/8 M
19	4160.688	SAFETY GAS VALVE
20	4160.701	RING NUT M12X0,75
21	4160.683	GAS COCK
22	4160.646	GROMMET 16-30-22
23	4161.018	SUPPORT BURNER
24	4161.015	BASE
25	4160.637	SWITCH
26	4160.638	COVER SWITCH
27	4160.631	ELECTRIC CABLE
28	4160.635	KEEPER WIRE DEVICE PA 107
29	4162.222	PIEZO IGNITOR WITH ADAPTER
30	N/A	ADAPTER FOR PIEZO IGNITOR
31	4160.639	RIVET POP
32	4160.967	90° DEGREE ELBOW 1/8"
33	4160.768	SUPPORT GAS NOZZLE
34	4160.766	GAS NOZZLE
35	4161.019	COPPER EXTENDIN VALVOLE-NOZZLE
36	4160.769	NECK PLATE
37	4160.676	GAS BURNER

S/R – Parts available by special request only

N/A – Parts not available